

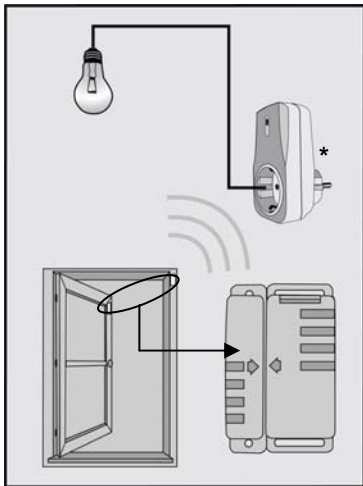


USER'S MANUAL
version 1.1

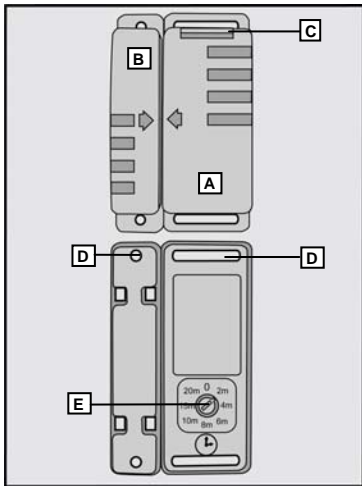
English



AMST-606 WIRELESS DOOR/WINDOW SENSOR

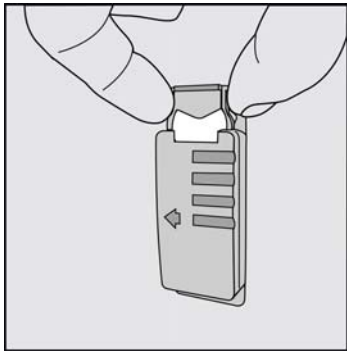


* Picture of an arbitrary COCO receiver
(not included)

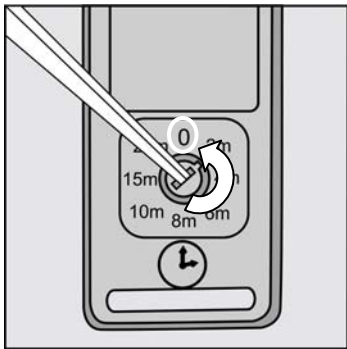


A: Part 1 magnetic switch
B: Part 2 magnetic switch

C: Battery compartment
D: Mounting point
E: Switch time selector

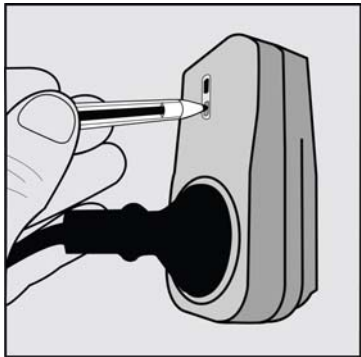


[1] Slide open the battery compartment and place a battery in the recess of the battery holder with the "+" pole face up. Now slide the holder back into the product.



[2] Turn the switch time selector to the "0" position.

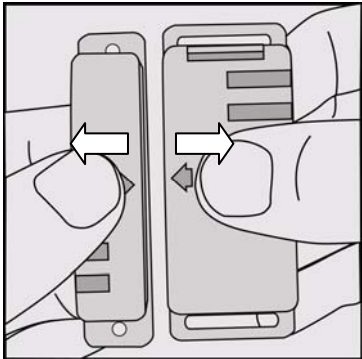
⚠ Only after a connection is made with the receiver (see **[4]**) can another switch time be selected!



[3] Activate the automatic search mode of the COCO receiver (see the corresponding manual).

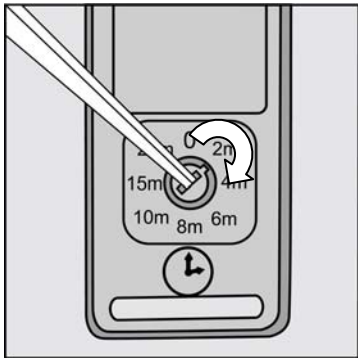
⚠ *The figure shows the AC-1000 mains socket switch (not included)!*

⚠ *This product only works with receivers that automatically program themselves with the transmitter code!*

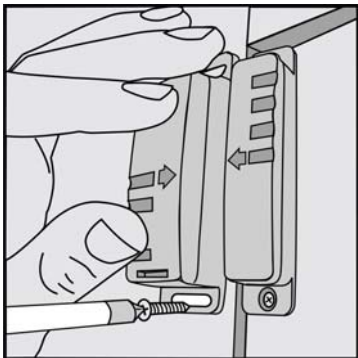


[4] Set both parts against one another so the arrows point toward each other. Now pull the parts away from each other to send an "on" signal.

⚠ *To confirm, the receiver switches on and off two times!*



- [5]** If desired, set a different "switch off" time:
- "0": The off signal is sent as soon as the two parts are put against one another again.
 - "2m": The off signal is sent after approx. 2 minutes, regardless of whether or not the door/window is open or closed.
 - "4m": The off signal is sent after approx. 4 minutes etc.




- [6]** Attach one of the parts to the door or window and the other to the frame. The arrows on the two parts must point toward each other. Attach the parts with as little space between them as possible.

⚠ *When the door/window is closed, the space between the parts must be less than 1.5 cm!*

Remarks **Reminders**

- This product must be used in combination with at least one COCO receiver. The receivers that are used must automatically program themselves with the transmitted code (see manual of the concerned receiver). Receivers on which the letter code ("house code") must be programmed manually are not suitable for use with this product.
- With this transmitter/magnetic switch, multiple receivers can be operated both simultaneously and independently.
- To prevent interference, avoid placing multiple products close to each other. The minimum distance between units should be approx. 50 cm.
- If the product does not work or does not work properly:
 - Check the correct placement and/or function of the battery (replace if necessary).
 - Check step for step whether the concerned receiver is programmed properly (see the manual for the receiver in combination with steps [2 – 4] of this manual).
 - Make sure the distance between the parts does not exceed 1.5 cm when the door or window is closed.
 - Set the switch time to a lower value (see [5]).

 **Safety instructions**

- Do not expose this product to excessive heat, direct sunlight or moisture.
- Remove the battery from this product if it will not be used for an extended period.
- Do not attempt to repair this product. If the product is damaged or if you are in doubt about the proper operation, take the product back to the place of purchase.
- Never use COCO products for life support systems or other applications in which equipment malfunctions can have life-threatening consequences.
- Do not use the product in damp areas. Clean the device with a clean cloth.

 **Power**

- Replace the battery if the concerned receiver no longer responds when the door or window is opened or closed.
- Only use a 3 Volt CR2032 lithium battery.

- Do not throw the battery into an open fire.
- Respect the local regulations when disposing of batteries.

Wireless

- This product works using a radio signal that passes through walls, windows and doors. The range is maximum 75 metres in the open air. The range indoors is strongly influenced by local conditions such as concrete, glass and metals. On average, the indoor range is approximately 30 metres.
- New double glass often includes a thin metallic layer. This type of glazing ("**HR glass**") allows most visible light to pass through but has a negative impact on radio signals. If there is HR glass between the transmitter and receiver, you should expect a significant reduction of the range of the wireless signal.
- This product operates at a frequency of 433.92 MHz. It complies with the essential requirements and other conditions of R&TTE Directive 1999/5/EC and can be used in all EU countries.
- There may be restrictions on the use of this device outside the EU. If this device is used outside the EU, check whether the device complies with the local directives.



This product complies with the essential requirements and other relevant provisions of the applicable European directives. The Declaration of Conformity (DoC) is available at www.coco-technology.com.



If possible, submit this product for recycling after use. Do not dispose of the product with household trash.

Warranty and copyright

This device is covered by a 2-year warranty that begins on the day of purchase. Visit www.coco-technology.com/warranty for additional information. Reprinting of (portions of) this manual without permission from Pan-Trade International B.V. is expressly prohibited.



PAN-TRADE INTERNATIONAL B.V.

P.O. BOX 126
4760 AC ZEVENBERGEN
THE NETHERLANDS
www.coco-technology.com



Declaration of Conformity

Pan-Trade International BV declares that the COCO product, model:

type designation	AMST-606 WIRELESS DOOR/WINDOW SENSOR
item number	74018

is in compliance with the essential requirements and other relevant provisions of directives R&TTE 1999/5/EC, EMC 2004/108/EC and LVD 2006/95/EC and is compatible with the standards EN 300 220-1/3, EN 55015, EN 301 489-1/3 and EN 60950.

Manufacturer / Authorised representative,



M.A. Hoekstra, managing director
Zevenbergen, 2008-01-30