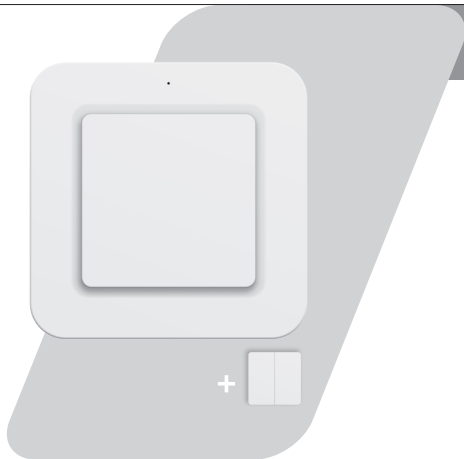


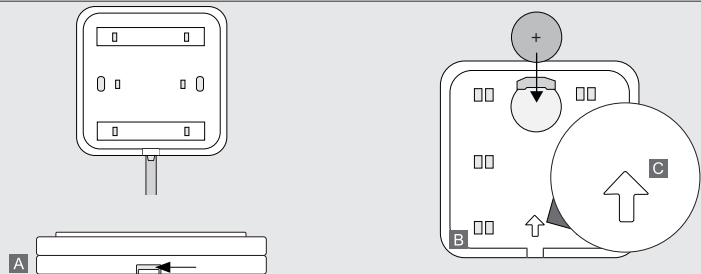
USER MANUAL
MULTI LANGUAGE



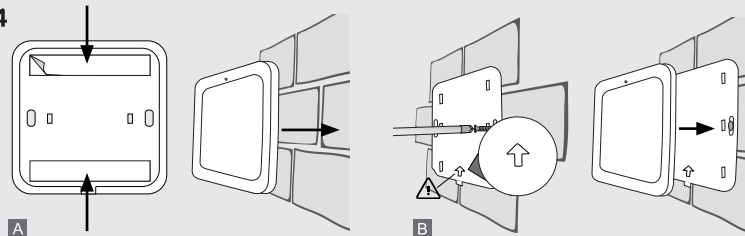
Item 71235 Version 1.0
Visit www.trust.com
for the latest instructions

WIRELESS WALL SWITCH

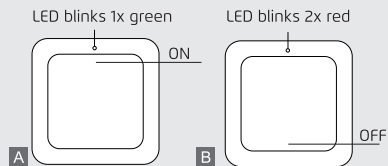
1



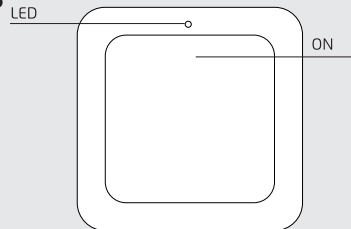
4



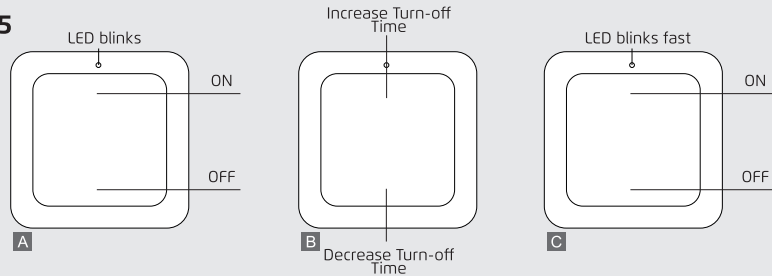
2



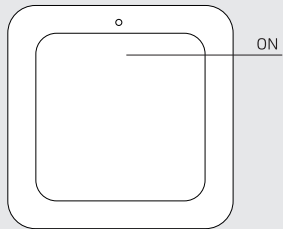
3



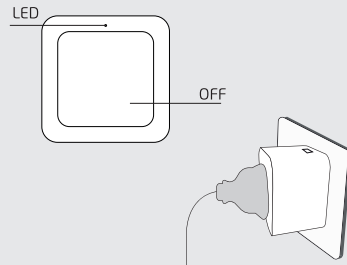
5



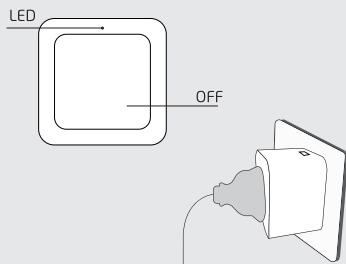
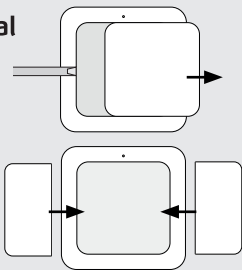
Optional



Optional



Optional



1. Insert/replace the battery

- A** Remove the back plate with a flat screwdriver by placing it at the bottom between the back and front plate of the wall switch
- B** Place a CR2032 battery in the wall switch
- C** Put the wall switch back on the back plate. Make sure that the arrows on the back plate and in the wall switch both point up.

2. Send ON-OFF signal

- A** Press the ON button on the wall switch 1x shortly to send an ON signal. The LED on the switch flashes 1x green.
- B** Press the OFF button on the wall switch 1x shortly to send an OFF signal. The LED on the switch flashes 2x red.

3. Pair a Trust Smart Home receiver

- A** Activate the learning mode of the receiver (Consult the receiver's manual on how to put it into the learning mode).
- B** When the learning mode is active, give an ON signal by pressing the ON button on the wall switch once to pair it to the receiver. The LED on the wall switch flashes 1x green.


4. Mount the wall switch

A Mount the wall switch with double-sided tape
If you want to mount the wall switch using the supplied double-sided tape, apply the double-sided tape to the back plate of the wall switch.

Place the wall switch (with the LED on the top) at the desired location on a flat surface.

B Mount the wall switch with screws

If you want to mount the wall switch using the supplied screws, first remove the back plate from the wall switch (see chapter 1 step **A**) and screw it tightly to the desired location.

 When mounting, the arrow on the back plate must point upwards. Then click the wall switch back on the back plate.

When mounting on a wall box, make sure it is placed at an even height with the wall and that the back plate is hand-tightened to prevent bending of the back plate.

5. Set the switch-off time

With the AWST-9000 it is possible to set a Turn-off timer. With this, the wall switch switches off the paired receiver after a set time.


- A** To set the Turn-off timer, press and hold the ON and OFF buttons simultaneously for 3 seconds until the LED starts flashing green
- B** Give an ON signal within 3 sec to extend the Turn-off timer and an OFF signal to shorten the Turn-off time. The LED indicates which switch-off time is selected.


0s - LED keeps flashing 1x (no turn-off time)
5s - LED keeps flashing 2x
1m - LED keeps flashing 3x
10m - LED keeps flashing 4x
30m - LED keeps flashing 5x
60m - LED keeps flashing 6x

After choosing the desired Turn-off time, press and hold the ON and OFF button simultaneously again for 3 seconds, until the LED flashes quickly to confirm the setting.

Optional: Adjust the dimming range

- A** Press the ON button to turn on the receiver.
- B** Press the ON button again to activate the dimming mode. The light will dim slowly in a cycle from high brightness to low brightness.
- C** Press the ON key for the third time to lock the desired brightness.

 Only with the ACC-250-LD and ACM-250-LD it is possible to dim the receivers by holding down the ON button to increase the brightness or holding down the OFF button to decrease the brightness.

 Press the ON button twice quickly to immediately set a dimmer to 100% brightness. Press the OFF button twice quickly to immediately switch a dimmer to the lowest brightness.

Optional: Create a double wall switch

To turn the AWST-9000 into a double wall switch, carefully remove the button with a flat screwdriver. Click the supplied push buttons for a double wall switch on the AWST-9000.

The two push buttons can be used as two separate channels to switch lamps / devices.

Optional: Unpair a Trust Smart Home receiver

Put the receiver in the learning mode (see the manual of the receiver for information on how to activate the learning mode).

When the receiver is in learning mode, send an OFF signal with the wall switch. The LED on the wall switch flashes 2x red.